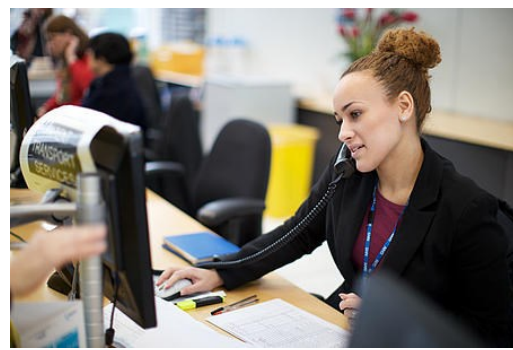


# Become a Health Career Ambassador

- ◆ Are you passionate about sharing your knowledge and expertise for your role?
- ◆ Are you interested in promoting the health and care sector as a career of choice to local people?
- ◆ Could you commit to a minimum of one hour a year which can support your personal and professional development?

**Yes? Then get involved to inspire our  
future health sector workforce.**



**For further information please contact:** Elaine Bradbury, East Cheshire  
Locality Lead (Cheshire Career Hub): [elaine.bradbury@nhs.net](mailto:elaine.bradbury@nhs.net)

Follow us:  @CheshCareersHub  Cheshire Career and Engagement  
Hub  Cheshirecareerhub

